



JAY FEATHER | 2017



JAY FEATHER™

2
YEAR
WARRANTY



#LETSJAYCO

Where do you want to go? With Jayco, you're headed straight for family fun—regardless of the destination. From wooded campgrounds to sandy beaches, swimming hole docks to scenic byways, maximize the moment with unmatched quality and added comfort. So what are you waiting for? Make new memories—and share them with the world.

GENERATIONS OF FAMILY FUN



Jay Feather 7: Page 4

The 2017 Jay Feather 7 lineup features 9 models, each 7 feet wide



Jay Feather: Page 4

The 2017 Jay Feather lineup features 10 models, each 8 feet wide

JAY FEATHER

GO AHEAD AND GET AWAY

Whether you've had a trip planned for months or decided to take a last-minute weekend getaway, Jay Feather travel trailers are built ready for the road—and the fun.

THE JAY FEATHER 7: SUPER TOWABLE, EXTRA FUN

Jay Feather 7 models are towable by most minivans, crossovers and SUVs.*

MINIVANS**



MAKE	MODEL	ENGINE
Chrysler	Town & Country***	3.6L V-6
Dodge	Grand Caravan***	3.6L V-6
Honda	Odyssey	3.5L V-6
Nissan	Quest	3.5L V-6
Toyota	Sienna***	3.5L V-6



Scan the QR code for complete towing guide resources

*Consult with your authorized automobile manufacturer or vehicle owner's manual

**Tow ratings equal or exceed the GVWR of the 16XR8 model only

***Towing package required

CROSSOVERS



MAKE	MODEL	ENGINE
Buick	Enclave FWD/AWD***	3.6L V-6
Chevrolet	Traverse FWD/AWD***	3.6L V-6
Ford	Explorer FWD/4WD	3.5L V-6
Ford	Explorer 4WD***	3.5L V-6 TC
Ford	Flex***	3.5L V-6
GMC	Acadia***	3.6L V-6
Honda	Pilot AWD	3.5L V-6
Hyundai	Santa Fe	3.3L V-6
Infiniti	QX60	3.5L V-6
Kia	Sorento AWD	3.5L V-6
Toyota	Highlander	3.5L V-6
Toyota	4Runner	4.0L V-6

EXPANDABLE TENTS DELIVER SPACE TO SPARE



ENJOY AN EASY FOUR-STEP

1. Unlatch the bed platform.
2. Guide the bed platform down (left).
3. Insert the bed bow brace (right).
4. Make the bed and enjoy!



5-YEAR TENT WARRANTY

We also offer five-year (5) coverage on our tents, with parts, labor and freight covered the first two years; factory labor and return freight during years three, four and five.



17XFD | COPPER



JAY FEATHER 7

We've packed tons of comfort and fun into this tow-friendly ultra-lite. Pair that with tough, sturdy construction and this trailer will help you make memories for years to come.



25BH | GRANOLA



JAY FEATHER

Who says you can't have a floorplan with all the amenities you want in a trailer that's easy to tow? These hardwall travel trailers make every step of your camping trip a breeze.



4-, 5- OR 6-CUBIC-FOOT REFRIGERATOR



23RBM MURPHY BED (SOFA VIEW)

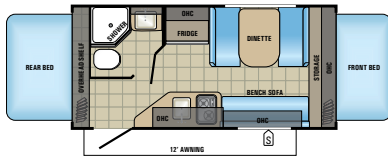


23RBM MURPHY BED (BED VIEW)



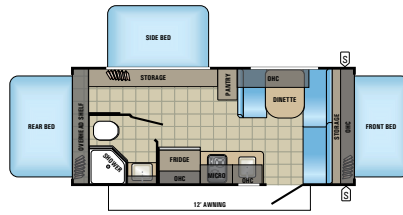
25BH KITCHEN

JAY FEATHER 7 FLOORPLANS



JAY FEATHER 7 | 16XR8

Ext. Lgth: 18' 10" Ext. Ht: 115"
Unloaded Wt. (lbs.): 2,860 Sleeps: 6-7



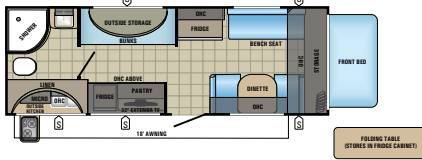
JAY FEATHER 7 | 17XFD

Ext. Lgth: 20' 9" Ext. Ht: 123"
Unloaded Wt. (lbs.): 3,355 Sleeps: 7



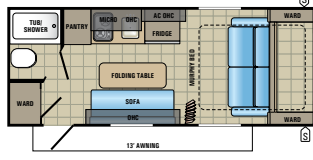
JAY FEATHER 7 | 19XUD

Ext. Lgth: 22' 5" Ext. Ht: 123"
Unloaded Wt. (lbs.): 3,595 Sleeps: 7-8



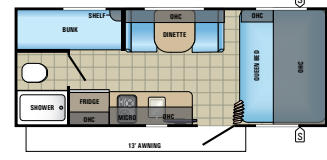
JAY FEATHER 7 | 20XTG

Ext. Lgth: 24' 5" Ext. Ht: 122"
Unloaded Wt. (lbs.): 3,810 Sleeps: 6



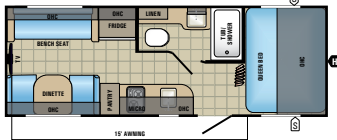
JAY FEATHER 7 | 18RBM

Ext. Lgth: 22' 2" Ext. Ht: 114"
Unloaded Wt. (lbs.): 3,125 Sleeps: 2-3



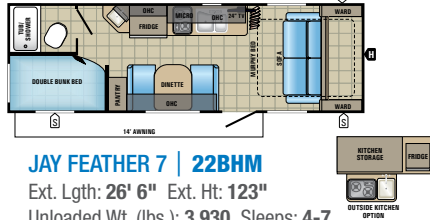
JAY FEATHER 7 | 19BH

Ext. Lgth: 22' 2" Ext. Ht: 120"
Unloaded Wt. (lbs.): 3,030 Sleeps: 5



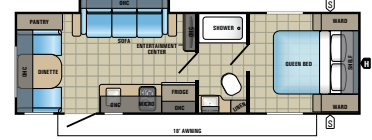
JAY FEATHER 7 | 20RL

Ext. Lgth: 24' 2" Ext. Ht: 117"
Unloaded Wt. (lbs.): 3,545 Sleeps: 4



JAY FEATHER 7 | 22BHM

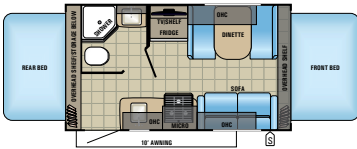
Ext. Lgth: 26' 6" Ext. Ht: 123"
Unloaded Wt. (lbs.): 3,930 Sleeps: 4-7



JAY FEATHER 7 | 23RD

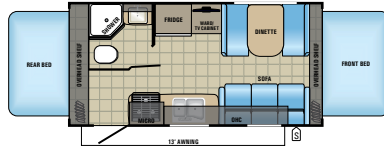
Ext. Lgth: 27' 8" Ext. Ht: 123"
Unloaded Wt. (lbs.): 4,195 Sleeps: 4-5

JAY FEATHER FLOORPLANS



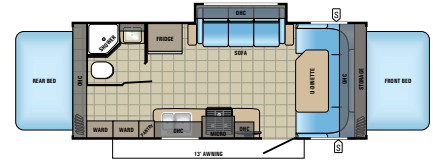
JAY FEATHER | X17Z

Ext. Lgth: 18' 7" Ext. Ht: 121"
Unloaded Wt. (lbs.): 3,005 Sleeps: 6-7



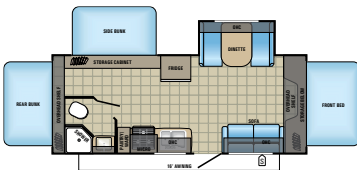
JAY FEATHER | X19H

Ext. Lgth: 20' 8" Ext. Ht: 123"
Unloaded Wt. (lbs.): 3,595 Sleeps: 6-7



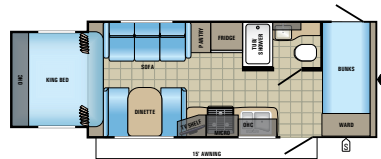
JAY FEATHER | X23B

Ext. Lgth: 24' 5" Ext. Ht: 123"
Unloaded Wt. (lbs.): 4,205 Sleeps: 7-8



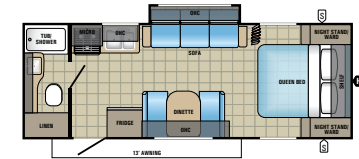
JAY FEATHER | X23F

Ext. Lgth: 24' 10" Ext. Ht: 119"
Unloaded Wt. (lbs.): 4,325 Sleeps: 8-10



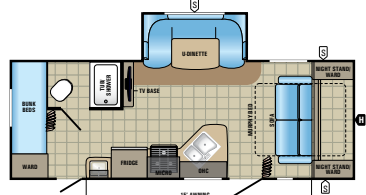
JAY FEATHER | X213

Ext. Lgth: 24' 0" Ext. Ht: 123"
Unloaded Wt. (lbs.): 4,215 Sleeps: 6-7



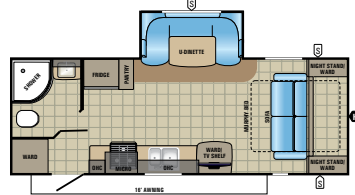
JAY FEATHER | 22FQSW

Ext. Lgth: 26' 4" Ext. Ht: 123"
Unloaded Wt. (lbs.): 4,205 Sleeps: 4-5



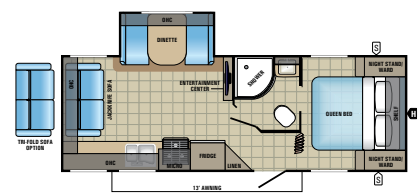
JAY FEATHER | 23BHM

Ext. Lgth: 26' 4" Ext. Ht: 128"
Unloaded Wt. (lbs.): 4,930 Sleeps: 4-6



JAY FEATHER | 23RBM

Ext. Lgth: 26' 4" Ext. Ht: 129"
Unloaded Wt. (lbs.): 4,755 Sleeps: 2-4



JAY FEATHER | 23RLSW

Ext. Lgth: 27' 3" Ext. Ht: 132"
Unloaded Wt. (lbs.): 4,805 Sleeps: 4-6



JAY FEATHER | 25BH

Ext. Lgth: 30' 4" Ext. Ht: 128"
Unloaded Wt. (lbs.): 5,265 Sleeps: 8-10

TENTED UNITS

JAY FEATHER 7 AND JAY FEATHER SPECS

MODELS		DIMENSIONS				WEIGHT (LBS.)				TANKS (GALS.)		
MODEL	FLOORPLAN	EXTERIOR TRAVEL LENGTH	EXTERIOR WIDTH	EXTERIOR HEIGHT (WITH A/C)	INTERIOR HEIGHT	UNLOADED VEHICLE WEIGHT	DRY HITCH WEIGHT	GROSS VEHICLE WEIGHT RATING	CARGO CARRYING CAPACITY	FRESH WATER CAPACITY (INCLUDES WATER HEATER)	GREY WASTE WATER CAPACITY	BLACK WASTE WATER CAPACITY
JAY FEATHER 7	16XRB	18' 10"	85"	115"	78"	2,860	315	3,500	640	31.6	25.4	25.4
	17XFD	20' 9"	85"	123"	78"	3,355	320	4,500	1,145	31.6	25.4	25.4
	19XUD	22' 5"	85"	123"	78"	3,595	310	4,500	905	31.6	25.4	25.4
	20XTG	24' 5"	85"	122"	78"	3,810	370	4,950	1,140	31.6	25.4	25.4
	18RBM	22' 2"	85"	114"	78"	3,125	410	3,975	850	31.6	25.4	25.4
	19BH	22' 2"	85"	120"	78"	3,030	290	3,975	945	31.6	25.4	25.4
	20RL	24' 2"	85"	117"	78"	3,545	365	4,995	1,450	31.6	25.4	25.4
	22BHM	26' 6"	85"	123"	78"	3,930	445	5,500	1,570	31.6	25.4	25.4
	23RD	27' 8"	85"	123"	78"	4,195	465	5,500	1,305	31.6	25.4	25.4
JAY FEATHER	X17Z	18' 7"	96"	121"	78"	3,005	405	3,500	495	28.5	30.5	22.5
	X19H	20' 8"	96"	123"	78"	3,595	325	4,950	1,355	48	30.5	22.5
	X23B	24' 5"	96"	123"	78"	4,205	465	4,950	745	48	30.5	22.5
	X23F	24' 10"	96"	119"	78"	4,325	445	5,995	1,670	48	30.5	22.5
	X213	24' 0"	96"	123"	78"	4,215	415	5,500	1,285	48	30.5	22.5
	22FQSW	26' 4"	96"	123"	78"	4,205	445	5,500	1,295	48	30.5	22.5
	23BHM	26' 4"	96"	128"	78"	4,930	600	6,250	1,320	48	30.5	30.5
	23RBM	26' 4"	96"	129"	78"	4,755	490	5,995	1,240	48	30.5	30.5
	23RLSW	27' 3"	96"	132"	78"	4,805	535	5,995	1,190	48	30.5	22.5
	25BH	30' 4"	96"	128"	78"	5,265	640	6,750	1,485	48	30.5	22.5

Unloaded Vehicle Weight (UVW): Sometimes referred to as "Dry Weight," UVW means the typical weight of this trailer as built at the factory. The UVW, as used in product literature and other promotional materials, does not include cargo, fresh water, propane, options or dealer-installed accessories.

Gross Vehicle Weight Rating (GVWR): GVWR means the maximum permissible weight of the trailer, including the UVW plus passengers, personal items, all cargo, fluids, options and dealer-installed accessories. The GVWR is equal to or greater than the sum of the UVW and the CCC.

Cargo Carrying Capacity (CCC): CCC means the maximum weight of all passengers, personal items, food, fresh water, propane, tools, other cargo and dealer-installed accessories that can be carried by the trailer. CCC is equal to or less than GVWR minus UVW. The addition of options will decrease the CCC.

Hitch Weight (HW): The hitch weight, as used in product literature and other promotional materials, does not include cargo, fresh water, propane gas, options or dealer-installed accessories. The addition of these types of items will either add to or subtract from the stated hitch weight.

It is important for your safety and enjoyment that your tow vehicle be adequately sized and equipped to tow and handle the GVWR of the RV you select. Review weights and rating of your tow vehicle and consult a competent advisor for questions or advice. Whether you are new to RVing or a veteran, get a feel for the performance of your tow vehicle before heading out on the roadways. When you tow an RV, you must drive differently than when you drive a single vehicle. Practice hooking up, driving, backing up and braking in a safe environment or seek out professional instruction. Jayco affixes a weight label to each RV which lists weight information for that vehicle. See specifications chart above.

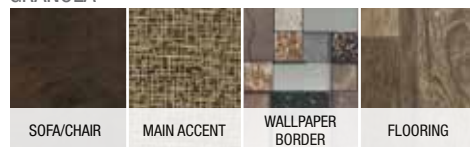
JAY FEATHER 7 AND JAY FEATHER STANDARDS AND OPTIONS

	Jay Feather 7	Jay Feather	Jay Feather 7	Jay Feather
Exterior Equipment				
TuffShell™ vacuum-bonded, laminated floor, side, rear and front walls including slideout room walls	S	S		
Vacuum-bonded, laminated bed platforms with reverse-cambered support with 1,100-pound capacity (all expandables)	S	S		
Magnum Truss™ Roof System with one-piece seamless DiFlex II material	S	S		
Norco® NextGen frame with integrated A-frame	S	S		
Equa-Flex® suspension (n/a on 16XRB, 18RBM, 19BH, X17Z)	S	S		
Single axle (16XRB, 18RBM, 19BH, X17Z)	S	S		
Double axle (17XFD, 19XUD, 20RL, 20XTG, 22BHM, 23RD, X19H, X213, 22FQSW, X23B, 23BHM, X23F, 23RBM, 23RLSW, 25BH)	S	S		
G20 tinted safety-glass windows	S	S		
Nitro-filled radial tires	S	S		
30-amp service	S	S		
20-pound propane bottle(s) with auto-regulator	S	S		
Stabilizer jacks with sand pads (4)	S	S		
Rear camera backup prep	S	S		
Solar prep	S	S		
Keyed-Alike™ lock system	S	S		
8,000-BTU side-mounted A/C	S			
13,500-BTU A/C (22BHM, 23RD)	S			
13,500-BTU A/C	0	S		
15,000-BTU roof-mounted A/C		0		
Spare tire and cover	CVP	CVP		
Power awning with LED lights	CVP	CVP		
Black tank flush	CVP	CVP		
Outside shower	CVP	CVP		
Exterior TV bracket with 110V electric and cable outlets	CVP	CVP		
Enclosed underbelly with Astro-Foil™ insulation in floor and roof	0	0		
Aluminum rims (2) (16XRB, 18RBM, 19BH, X17Z)	0	0		
Aluminum rims (4) (n/a on 16XRB, 18RBM, 19BH, X17Z)	0	0		
Interior Equipment				
Screwed-and-glued cabinetry	S	S		
LED lighting throughout	S	S		
AM/FM/CD/DVD/Bluetooth® stereo with speakers			S	
AM/FM stereo with speakers	S			
4-, 5- or 6-cubic-foot refrigerator (model specific)	S	S		
2- or 3-burner cooktop (oven included on 3-burner models)	S	S		
Microwave	S	S		
Plywood dinette, bunk and bed bases	S	S		
Jayco-exclusive Simmons® mattress with bedspread (excluding bed slides, expandable tent beds and bunks)	S	S		
Bath skylight and roof vent	S	S		
Solid shower enclosure (20XTG, 23RBM, 23RLSW)	S	S		
Tub/shower surround	S	S		
24-inch LED TV (Jay Feather 7: n/a on 20RL, 20XTG; Jay Feather: X17Z, X213, X23B)	0	0		
32-inch LED TV (Jay Feather 7: 20RL, std. on 20XTG; Jay Feather: X19H, 22FQSW, 23BHM, X23F, 23RBM, 23RLSW, 25BH)	0	0		
Sink cover (Jay Feather 7: 20XTG, 22BHM; Jay Feather: n/a on X17Z)	0	0		
4-inch heated bed mats (Jay Feather 7: 1 for 20XTG; 2 for 16XRB and 19XUD; 3 for 17XFD; Jay Feather: 2 for X17Z, X19H and X23B; 3 for X23F)	0	0		
Tri-fold sofa iLO jackknife sofa (23RLSW, 25BH)			0	

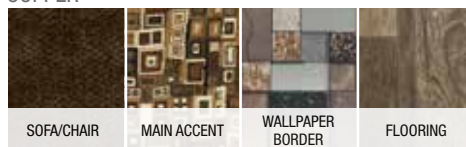
S - Standard 0 - Optional CVP - Customer Value Package

INTERIOR DÉCOR

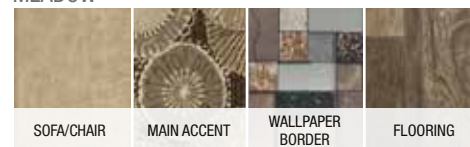
GRANOLA



COPPER



MEADOW



MAKING MEMORIES

THAT LAST GENERATIONS—LET'S JAYCO

Whether you're out for excitement, relaxation or just time together, we take steps others don't to help you stay focused on the fun. No cutting corners here. Let us go the extra mile so you don't have to.



JAYCO'S ROOF **VS** OTHER ROOFS



4,500 POUNDS ON A JAYCO ROOF VS. OTHER ROOFS

THE MAGNUM TRUSS™ ROOF SYSTEM

50 percent stronger

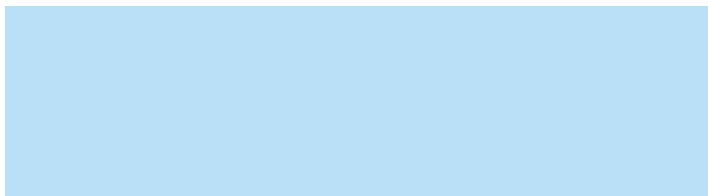
THE JAYCO DIFFERENCE

- 1. Main walls, slideout walls and floors are vacuum-bonded** for better protection from the elements
- 2. Lightweight materials and aerodynamic profile** for easier towing
- 3. Extra-wide corner seals** on doors and windows to prevent leaks
- 4. Durable, water-repellent vinyl tent**
- 5. Permanent tent-to-bunk attachment system** offers easy setup; supports up to 1,100 pounds
- 6. Hook tent frame** for more headroom in the bunk area

- 7. Magnum Truss Roof System** withstands 4,500 pounds—50 percent more than other roofs
- 8. 3/8-inch roof decking** secured at every seam
- 9. One-piece, sidewall-wrapped DiFlex II** material provides the ultimate in leak protection
- 10. Norco® NextGen frame with integrated A-frame** prevents the hitch from buckling



Meet your Jayco Dealer



We work hard—so you can play hard. From finding the perfect Jayco for your family to providing flexible financing options and full-service support, we're here to help.

Follow Jayco



Jayco, Inc., P.O. Box 460, Middlebury, IN 46540, www.jayco.com See dealer for further information and prices. All information in this brochure is the latest available at the time of publication approval. Jayco reserves the right to make changes and to discontinue models without notice or obligation. Photos in this brochure may show optional equipment and props for photography purposes. RVs built for sale in Canada may differ to conform to Canadian codes. ©2016 Jayco, Inc. 274735 0816-70K Printed in U.S.A.

Travel with Confidence

2
YEAR
LIMITED
WARRANTY

At Jayco, we build our RVs to handle every adventure, then back them with our industry-leading 2-year limited warranty. We, with support from our select partners, have you covered for **2 camping seasons**. That's **730 days**. You won't find a better warranty in the business, because the only strings we attach are those that deliver the ultimate in reliability. That's the Jayco difference. So go explore. We have the warranty that will follow you anywhere. For a copy of our 2-year limited warranty with complete terms and conditions, please contact your local Jayco dealer.

FREE
ROADSIDE
ASSISTANCE

A year's access to Coach-Net™—the country's largest RV emergency road service.



eco advantage™

Jayco's long-term commitment to generations of family fun

After five years of increased efforts to eliminate waste, conserve energy and increase recycling, we've come a long way in building RVs that are not only better for your family—but also better for the planet.

Learn more at Jayco.com/EcoAdvantage